

Proven Easy Operation

# Open-Short Tester

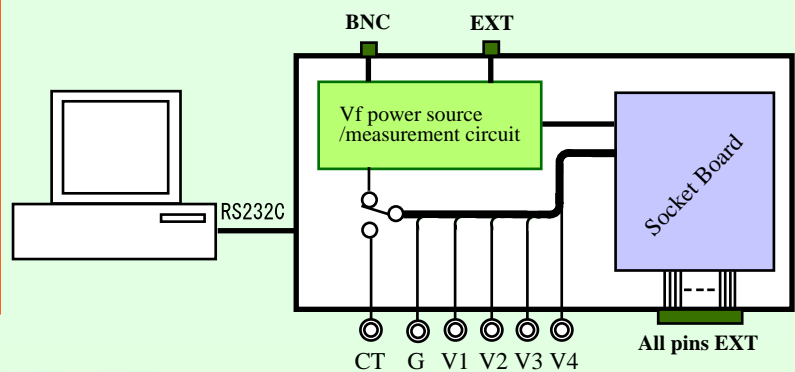
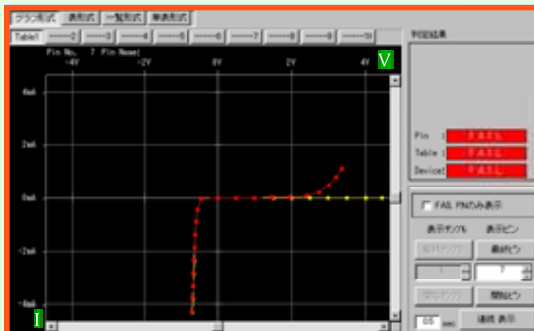
**HED-V3000 series**

HED-V3000 series provides trace function and pass/fail function which are the key factor to the IC quality. This equipment control can implement the high accuracy in measurement without using curve tracer. As friendly software makes a judge pass/fail, offers the time-saving solution for analysis and measurement taking long time.

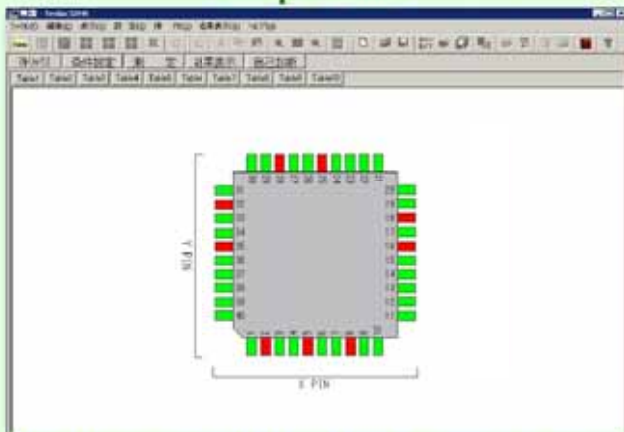
## Features

### Realization of resistance measurement due to four probe method

- Able to supply up to 4 DC power unit from outside terminals and also to contact the HED-V3000 to other measurement equipment.
- Capable to measurement with accuracy the resistance value between any two pins by using four probe method.
- Measurement data can save with text format so that users are able to edit on EXCEL and so on.
- Capable of pass/fail judgment from comparative data of standard sample and test sample.
- Installing plural same sample, continuous test is possible.
- Applicable to maximum 512 pins by 128 pins step for test pins.

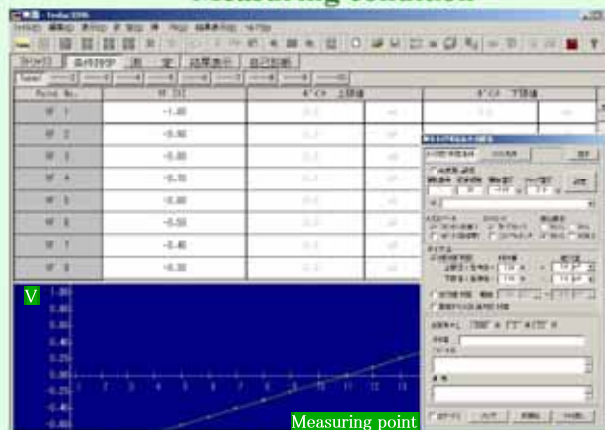


Test pin editor



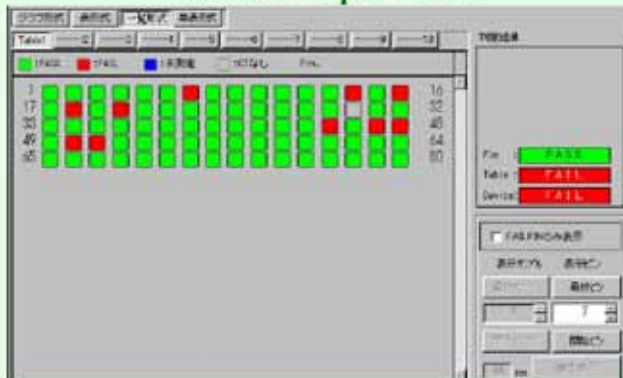
Capable to be set as GND, Vdd from all pin, looking package image.

Measuring condition



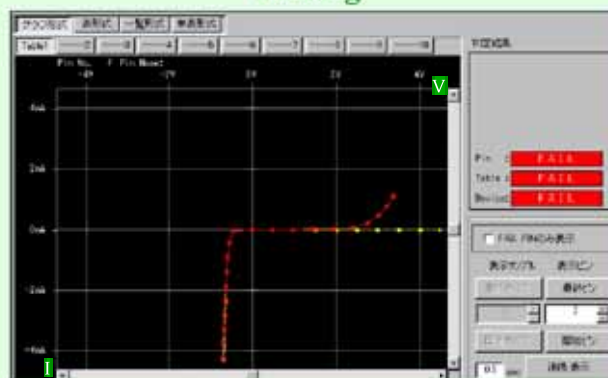
Setting of pass/fail on the measuring point is possible.

Location map on result



Pass/Fail pins for each pins are showed by dividing colors.

Tracing



By displaying simultaneously trace of standard sample and test sample, can look the pass/fail.

Specification

Voltage / Current measurement Vf/Im	Output voltage Range of measuring current Measurement accuracy Measuring point Measuring table No. Series resistance Mode of voltage setting	MAX. +/-10V (0.01V step) 100nA, 1 $\mu$ A, 10 $\mu$ A, 100 $\mu$ A, 1mA, 10mA, 100mA Full scale by 1% MAX.20 points MAX.10 tables 100 $\Omega$ , 1K $\Omega$ , 10K $\Omega$ , 100K $\Omega$ Choice from voltage drop method and true voltage method
Resistance measurement	Measurement scope Measurement accuracy Measurement range	0.01 $\Omega$ ~ 100 $\Omega$ +/-0.01% Choice from 50 $\mu$ A, 10mA, 100mA
Measurement speed	[Exzample]	Some 10 second per 4 points $\times$ 256 pins Some 40 second per 20 points $\times$ 256 pins
Supply voltage O · S Outer dimation Weight	512pin type 1024pin type	AC100V/1A、50/60Hz Windows9x W480 $\times$ D550 $\times$ H240(main body) W570 $\times$ D650 $\times$ H1010(main body) 20Kg ~ 27Kg( 512pin) 94Kg ~ 102Kg(1024pin)

◆ Capable to offer constant current(I<sub>f</sub>)/voltage measurement(V<sub>m</sub>) as special specification.

output current / voltage	MAX. +/-100mA/3V
Measurement accuracy	Full scale by 1%
Current range	50 $\mu$ A, 10mA, 100mA
Measuring table No.	MAX.10 tables

Pin number	Model	EXT. terminal number	Resistance measurement
256	HED-V3256N	0	/
	HED-V3256N1	1	
	HED-V3256N2	2	
	HED-V3256N3	3	
	HED-V3256N4	4	
	HED-V3256NR	0	○
HED-V3256NR1	1		
384	HED-V3384N		/
	HED-V3384N1	1	
	HED-V3384N2	2	
	HED-V3384N3	3	
	HED-V3384N4	4	
	HED-V3384NR	0	○
HED-V3384NR1	1		
512	HED-V3512N	0	/
	HED-V3512N1	1	
	HED-V3512N2	2	
	HED-V3512N3	3	
	HED-V3512N4	4	
	HED-V3512NR	0	○
HED-V3512NR1	1		
	HED-V3512NR2	2	

**HANWA** HANWA ELECTRONIC IND, CO., LTD.

Head Office <http://www.hanwa-ei.co.jp/>

689-3, OGAITO, WAKAYAMA, 649-6272 JAPAN

TEL +81-734-77-4435 FAX +81-734-77-3445

**Kumamoto Division**

2840, ITAKUSU, MIKAWAMACHI TAMANAGUN,

KUMAMOTO, 861-0913 JAPAN

TEL +81-968-34-3339 FAX +81-968-34-3369

● Agency